

# Blank Hundred Chart



## Hundred Chart

|    |    |    |    |    |    |    |    |    |     |
|----|----|----|----|----|----|----|----|----|-----|
| 1  | 2  | 3  | 4  | 5  | 6  | 7  | 8  | 9  | 10  |
| 11 | 12 | 13 | 14 | 15 | 16 | 17 | 18 | 19 | 20  |
| 21 | 22 | 23 | 24 | 25 | 26 | 27 | 28 | 29 | 30  |
| 31 | 32 | 33 | 34 | 35 | 36 | 37 | 38 | 39 | 40  |
| 41 | 42 | 43 | 44 | 45 | 46 | 47 | 48 | 49 | 50  |
| 51 | 52 | 53 | 54 | 55 | 56 | 57 | 58 | 59 | 60  |
| 61 | 62 | 63 | 64 | 65 | 66 | 67 | 68 | 69 | 70  |
| 71 | 72 | 73 | 74 | 75 | 76 | 77 | 78 | 79 | 80  |
| 81 | 82 | 83 | 84 | 85 | 86 | 87 | 88 | 89 | 90  |
| 91 | 92 | 93 | 94 | 95 | 96 | 97 | 98 | 99 | 100 |

# Numerals Expanders

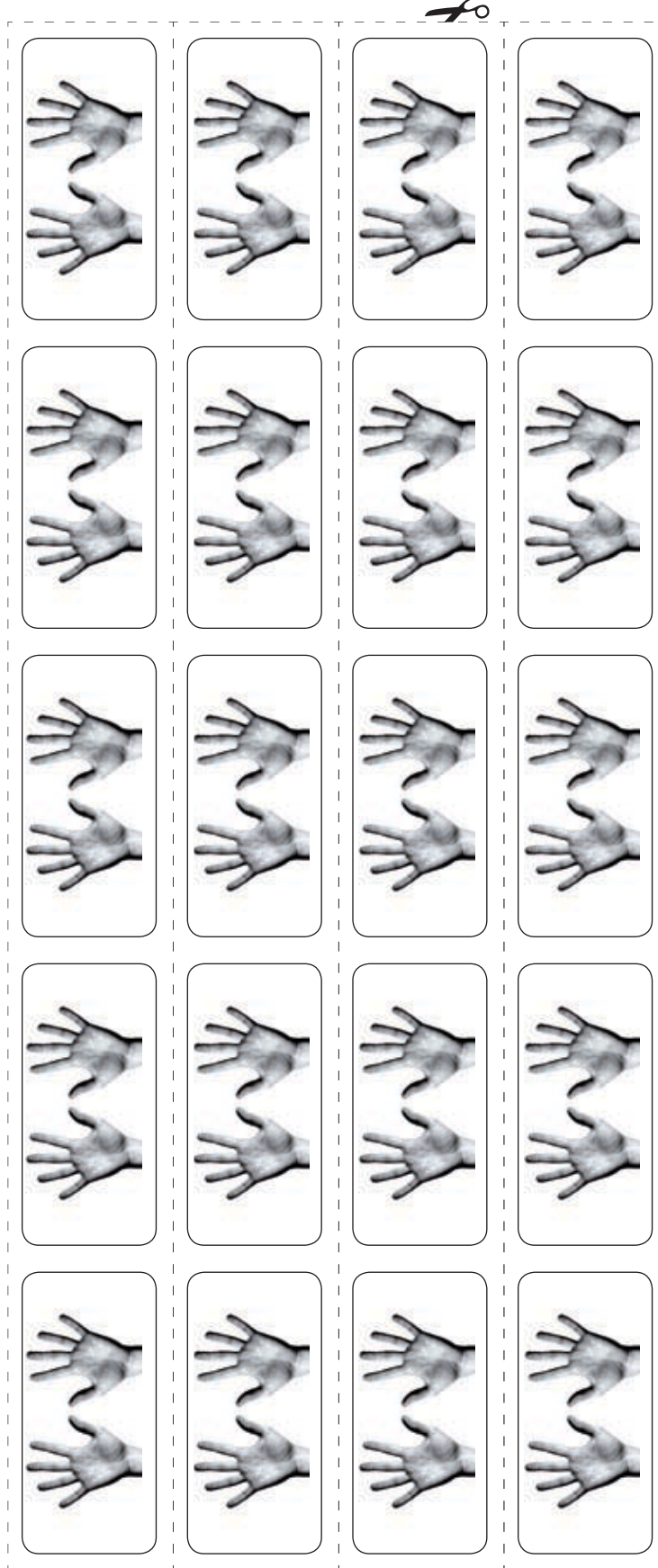
*Note:* Create re-usable expanders by covering the blank spaces with clear contact. Use a non-permanent marker when writing numbers. Enlarge on the photocopier to make a 'display' expander.

# Digit Cards and Strips

Note: Cut these out to make 'tens' cards.



Note: Copy, stick onto card and join two rows to make one 'hundred' strip.



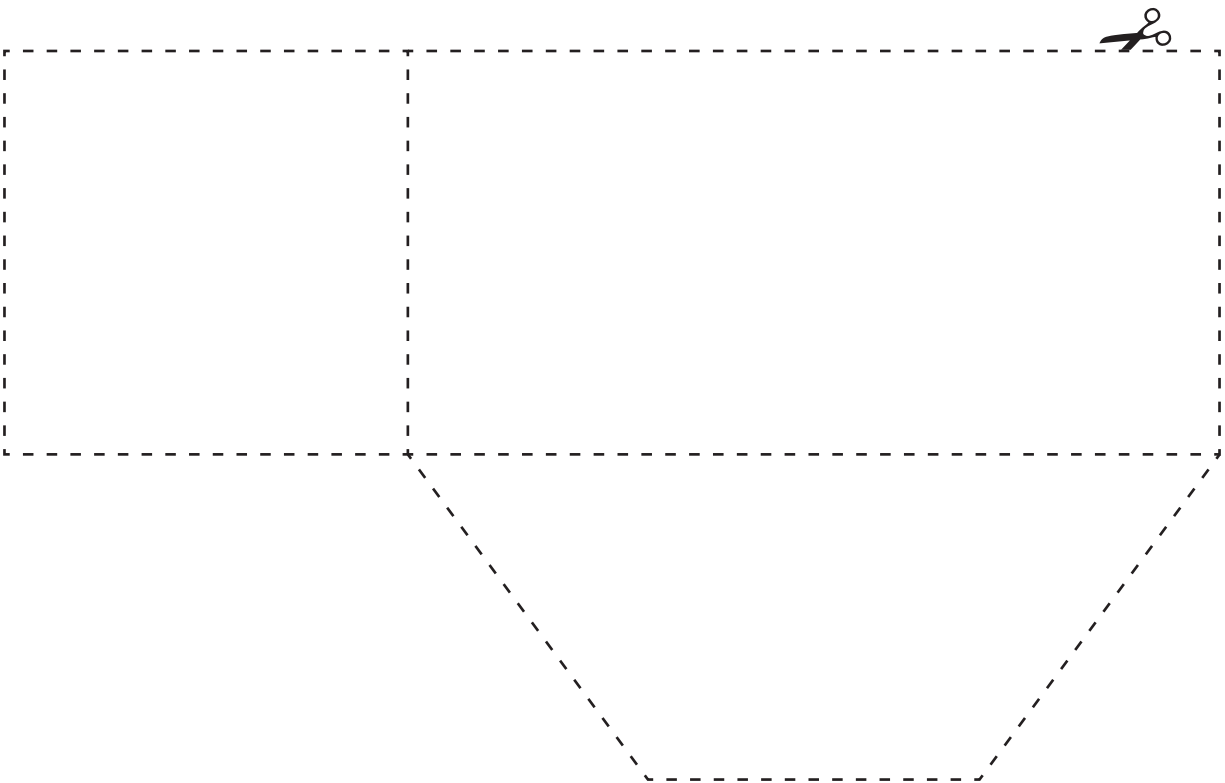
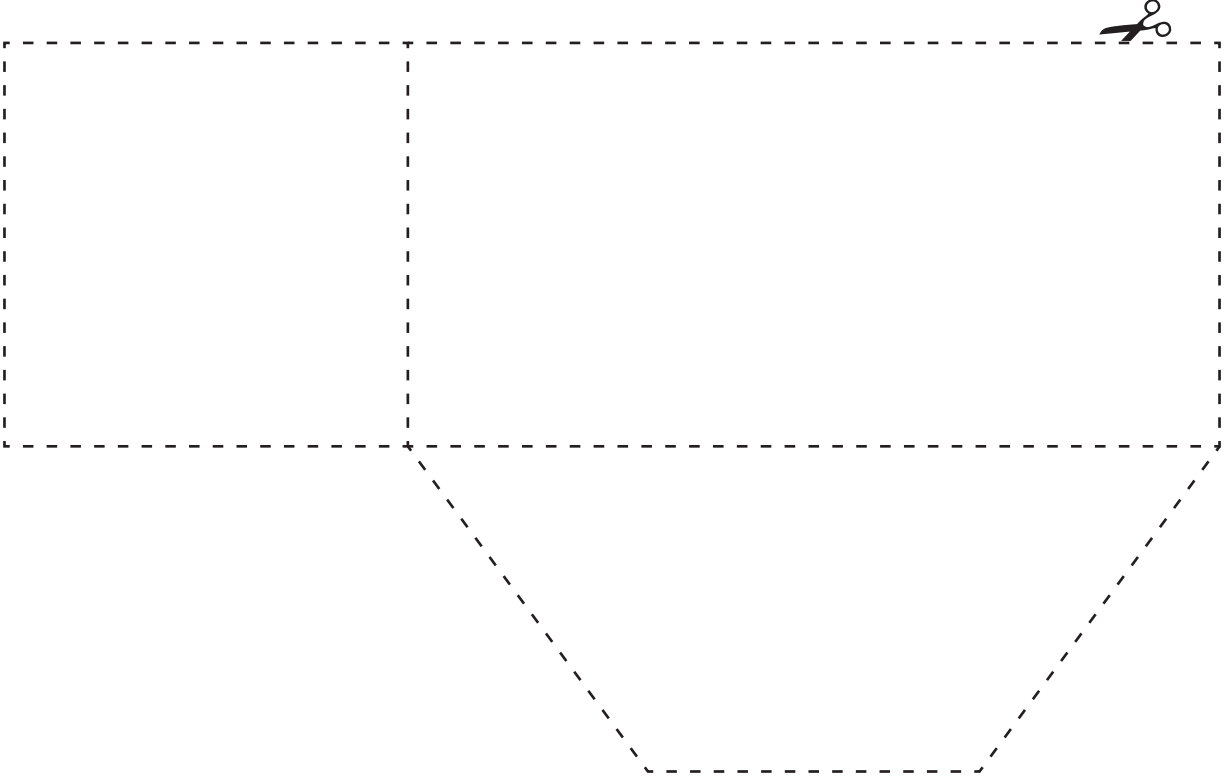
### Count-On Game Board

|    |    |    |    |
|----|----|----|----|
| 41 | 42 | 43 | 44 |
| 45 | 46 | 47 | 48 |
| 41 | 42 | 43 | 44 |
| 45 | 46 | 47 | 48 |
| 51 | 52 | 53 | 54 |
| 55 | 56 | 57 | 58 |
| 51 | 52 | 53 | 54 |
| 55 | 56 | 57 | 58 |

# Blank Number Lines



# Identifying Quadrilaterals

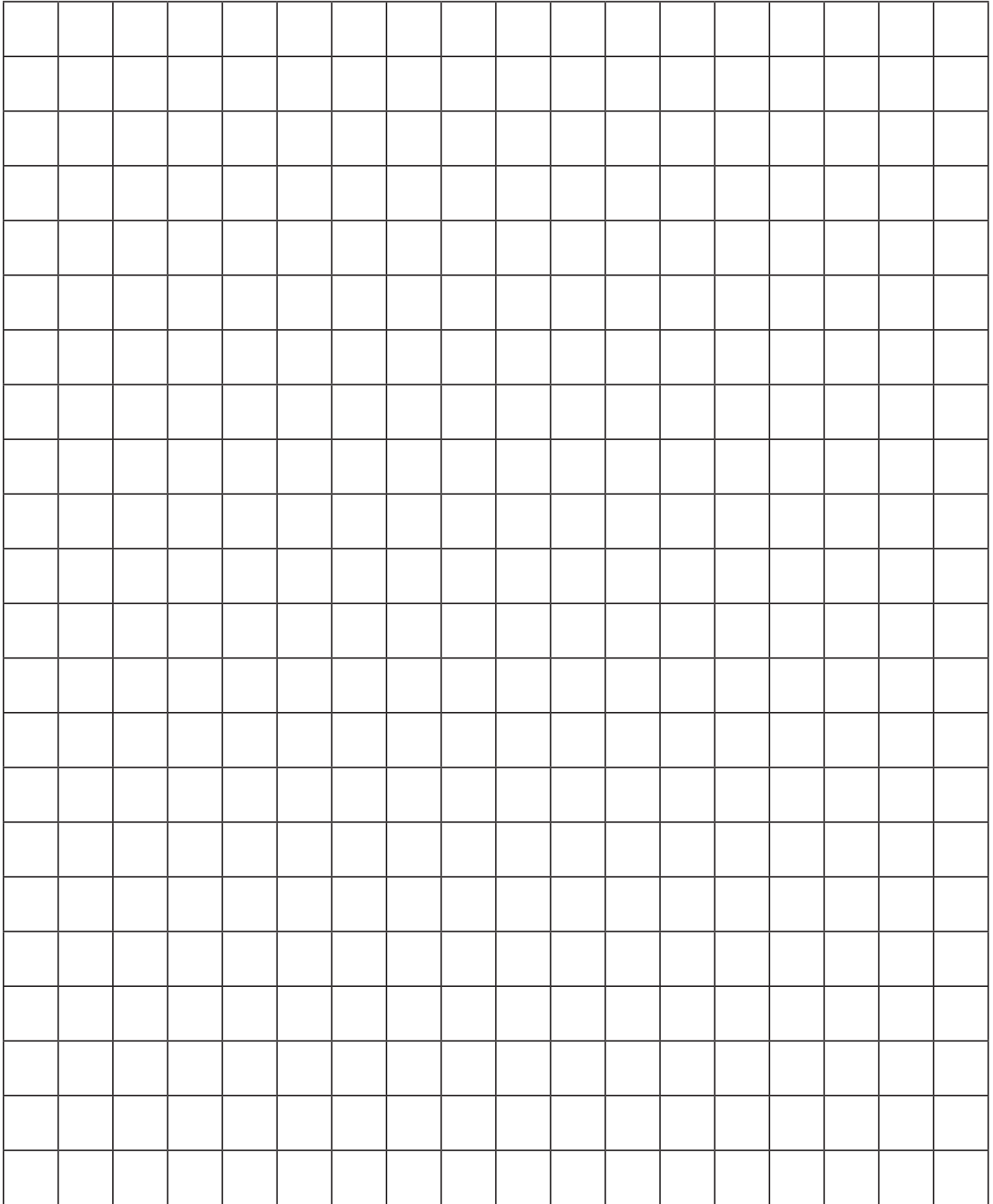


# Play Money

✂

|   |   |  |
|---|---|--|
|    |    |    |
|    |    |    |
|    |    |   |
|  |  |  |
|  |  |  |
|  |  |  |
|  |  |  |

# 1-Centimetre Grid Paper



## Hundreds, Tens and Ones Cards



|            |        |        |
|------------|--------|--------|
| 0 Hundreds | 0 Tens | 0 Ones |
| 1 Hundreds | 1 Tens | 1 Ones |
| 2 Hundreds | 2 Tens | 2 Ones |
| 3 Hundreds | 3 Tens | 3 Ones |
| 4 Hundreds | 4 Tens | 4 Ones |
| 5 Hundreds | 5 Tens | 5 Ones |
| 6 Hundreds | 6 Tens | 6 Ones |
| 7 Hundreds | 7 Tens | 7 Ones |
| 8 Hundreds | 8 Tens | 8 Ones |
| 9 Hundreds | 9 Tens | 9 Ones |